



ASF >>>>>>>>
EXCAVATION & DEMOLITION

**CAPABILITY
STATEMENT**

Who We Are

Our project teams and operators are highly experienced and capable. Our subcontractor selection process is rigorous and we pride ourselves on delivering outstanding customer service and excellence in productivity and results.

Our focus is on delivering the highest quality of industrial demolition, excavation and earthworks in NSW. With a highly trained team of restricted Demolition Supervisors, operators and labourers, our team has always maintained the most current up to date safety training. With the **"Safely motivated"** philosophy the ASF team understands the importance of completing projects safely and to the highest possible standards.

Safety

Safety is our No.1 Priority in all our Projects! ASF's safety record stands at zero serious injuries in 10 years.

Quite an achievement!

Safety Procedures

Our teams including site managers, foremen, labourers and operators are all empowered to analyse all individual site circumstances and conditions at the inception of our projects. A team meeting is then undertaken, all members contribute to a safety analysis process. A safety committee is appointed, the hierarchy of controls is engaged, a thorough site safety mission is undertaken, and the placement of controls is implemented.

After a thorough inspection & audit, work details are assigned and SWMS and risks assessments are talked through and signed. All documents are double checked, finalised and forwarded onto project managers and clients. A final **"commitment to safety briefing"** is held and project tasking can then commence.

Throughout the project, daily toolbox talks and safety briefings are conducted. SWMS and risk assessment amendments are carried out as site conditions develop.



Our Services

At ASF we undertake all types of **excavation, demolition & earthmoving projects**. From service trenches and clearing to bulk excavation, and final trim, we cover all facets of civil construction & demolition.

ASF's subcontractors have a variety of skill sets and we are proud to show a record of successful alliance and projects that we have delivered on time and on budget.

Clients and Projects

ASF Excavations has been part of smaller residential domestic projects including apartments and townhouses, and on medium to large construction projects.

A review of our clients and projects are:

- » **Apex Mendri** – Apartment Complex, Crows Nest.
- » **Meridian Constructions** – Campbelltown Catholic Club.
- » **Richard Crookes** – Bayside Apartment, Botany.
- » **Freyssinet** – Sydney Water, South Camden.
- » **Colemans Fencing** - Northwest Rapid Transit and Canberra Light Rail.
- » **Liverpool Council** – Works Division.
- » **South West Builders** – Pymble and Killara.
- » **NSF Electric** - Clairmont Meadows Public School.
- » **Rainbow Group** – Star City Casino.
- » **Diona Civil** – Northern Road Londonderry.
- » **QC Project Management** – various residential.
- » **Ozlect** – Rosemeadow Catholic School.

We believe our prices are some of the most competitive in Sydney and we are happy to talk through your earthmoving project or ideas.

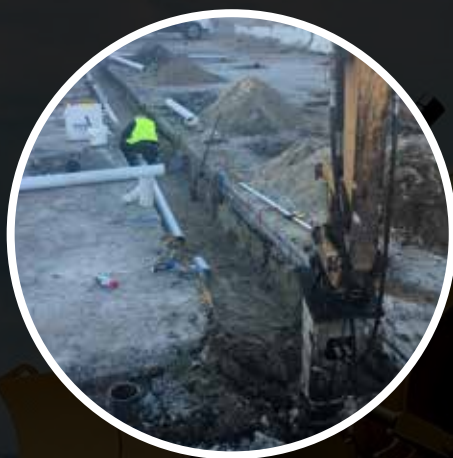
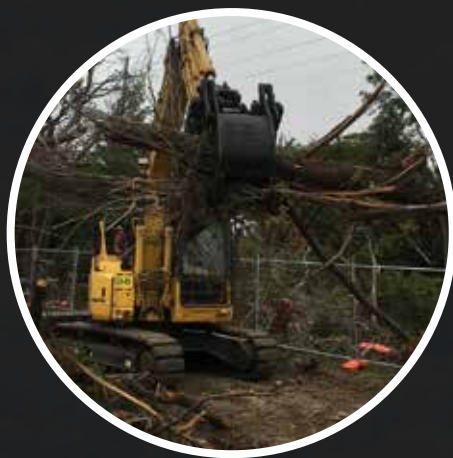
Recent Projects

As a demonstration of our capability to undertake the works as described 'ASF' can provide this statement of relevant experience.

In the recent past we have completed the safe demolition & safe removal of some 25-30 structures & various building types including residential, commercial & industrial types of various construction materials up to 15m in height.

Some of our other projects include a number of public amenities buildings for Wollondilly Council. They consisted of mostly brick, concrete and steel. Some asbestos was encountered & as per 'ASF' policy an asbestos register was raised. The asbestos was legally removed & disposed of by licensed asbestos contractors. After hazardous materials clearance certificates were issued the demolition continued.

Other examples of relevant demolition experience include the dismantling of a horse stabling complex and several large and substantial rural storage sheds. They consisted of steel girder columns and rafters with concrete footings and steel sheet cladding. Some of the steel girder rafters required the use of a 40-tonne mobile crane and elevated work platforms to safely deliver the sections to ground level for further dismantling.



Plant and Equipment

A snapshot of our well maintained and modern equipment would include:

» **Caterpillar 320GC 20 Tonne Excavator 2017**

- ≈ Genesis XT Demolition Shears
- ≈ Epiroc CB950 Concrete buster
- ≈ Epiroc BP2050 Hydraulic Pulveriser

» **Komatsu 14 Tonne PC138 Excavator 2012:**

- ≈ Hammer – Atlas Copco RB120 Silenced
- ≈ Komatsu Tilt Bucket
- ≈ Mud Bucket and GP Bucket
- ≈ Deep Drilling Rock Auger (up to 5m depth)

» **Caterpillar 5 Tonne 304CCR Excavator 2009**

- ≈ Hammer Atlas Copco RB202
- ≈ Auger Drive Drill master AA-3G
- ≈ Assorted Augers – 200, 250, 350, 400, 450 & 600
- ≈ Hydraulic Grabs
- ≈ Sifting Bucket
- ≈ GP Buckets

» **Caterpillar 259D Positrak 2017**

- ≈ Caterpillar Forestry Mulcher HM115C
- ≈ 4 in 1 Bucket
- ≈ Pallet Fork

All of our plant is equipped with flashing lights, reverse cameras and squawkers to comply with construction requirements. Regularly serviced & upgraded. Our fleet is strong & reliable.

Quality

We understand the importance of producing quality outcomes for clients. Our quality objective is to meet or exceed client requirements and expectations in a proactive, professional and cost-effective manner.

We have developed and implemented a Quality Management System that allows our organisation to document and improve our practices in order to better satisfy the needs and expectations of our clients, stakeholders and other interested parties.

All demolition complies with **AUS/NZ 2601-2001**.

All Earthworks & excavations comply with **AUS/NZ 3798-2007**.



Workplace Health and Safety

ASF Excavations is committed to providing and maintaining a safe and healthy workplace and to operate within a safety culture that ensures all staff know that they are valued and understand their role in maintaining health and safety in the workplace.

Our Workplace Health and Safety Management System outlines general health and safety rules, responsibilities of personnel, related policies and procedures including first aid, drug and alcohol and other WHS information applicable to all employees and contractors.

Our WHS Site Safety management Plan complies with **AS/NZ 4801-2001**.

Environmental Management

ASF Environmental Management Plan has been developed in conjunction with Environmental consultants.

Our Construction Environmental Management Plan does highlight that all personnel has a base level duty of care to prevent environmental harm as described in the Environmental Protection Act 1986.

ASF undertakes training & awareness competency regularly. All our team members are entrusted to comply with environment & heritage risk management.

Construction & Demolition Environmental Risk Management Plans are in place at all our projects. They address all individual site specific conditions.

Key Personnel

Robert May – Site Manager / Site Supervisor

30 years in Construction Industry

Construction Induction	CGI0148282SEQ01
Cert I in Construction	4 units
Cert II in Construction	10 units
Cert III In Civil Construction Plant Operations	25 units
Business Management Diploma	8 modules
Demolition Supervisor	19 units
Asbestos Awareness	10675 NAT
Restricted Demolition License	AD 213437
First Aid Certificate	2019-24698

Scott Thomson – Site Foreman / WHS Officer

8 years in construction with extensive industry knowledge in a range of construction and demolition tasks and roles

Construction Induction

CG1240614SEQ02

Sejuti Paul – Project Engineer

7 years in the Engineering/Construction Industry – experience in various areas (Technical Engineering, Safety, and Quality).

Bachelor of Civil Engineering, Diploma in Engineering Practice – UTS

Diploma in Project Management – Careers Australia

Construction Induction

CGI0341548SEQ02

Anita Ryall – Office Administrator

20 years experience in Senior Contracts Administration

Sydney Light Rail

Parramatta Light Rail

Transport for NSW

Construction Induction

CG101390910SEQ1

ASF >>>>>>>>

EXCAVATION & DEMOLITION

Business and Administrative Information

Business name

ASF Excavations Pty Ltd

Office address

St Andrews New South Wales Australia 2566

ABN

87 151 040 381

Website

www.asfexcavations.com.au

Phone

0432 506 741

Email

sales@asfexcavations.com.au